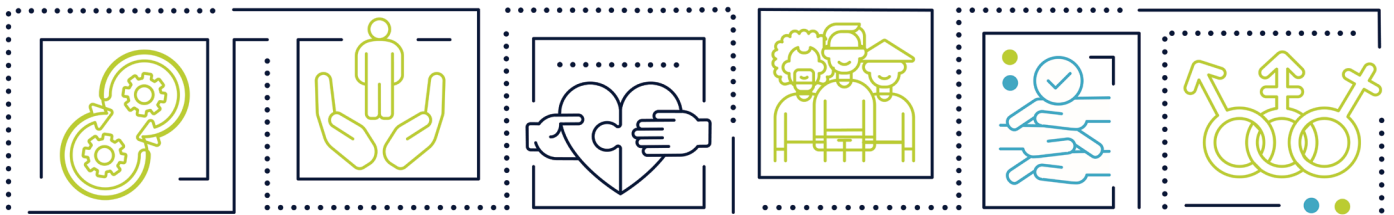


MH+D

HEALTH EQUITY CONFERENCE

FEBRUARY 28, 2025 | LINCOLN, NEBRASKA



**POSTER
SESSION**

HEALTH EQUITY POSTER SESSION

(Listed by Poster Number)

2025 MHDI Health Equity Conference

Welcome to the 2025 MHDI Health Equity Conference Poster Session! Posters are listed by assigned poster number. The Poster Session will be displayed on the first floor outside of breakout rooms A-D.

- 1. Overcoming Systemic Barriers to Employment and Social Determinants of Health: The Need to Expand Paratransit in Rural Texas for Adults with Intellectual and Developmental Disabilities.** Rahma Arif, The University of Texas at Dallas; Luba Ketsler, MS, School of Economic, Political and Policy Sciences at The University of Texas at Dallas.
- 2. Commercial Tobacco & Health Disparities: Advancing Health Equity.** Ranae Aspen, Nebraska Department of Education.
- 3. A Birth Equity Quality Improvement Initiative for Nebraska Delivery Hospitals.** Kara Foster, NPQIC; Sydnie Carraher, NPQIC; Lindsey Steele, NPQIC.
- 4. Promoting Equitable Screening Practices for Substance Use Disorder Among Perinatal Populations in Nebraska.** Sydnie Carraher, NPQIC; Kara Foster, NPQIC; Lindsey Steele, NPQIC.
- 5. Social Determinants and Disparities in Multimorbidity Among Older Adults in Sub-Saharan Africa: A Systematic Review.** Sunkanmi Folorunsho, Department of Sociology, University of Nebraska-Lincoln; Munirat Sanmori, Georgia State University, Department of Sociology.
- 6. The Bloodless Period: A Transfeminine Experience.** Rin Nguyen, University of Nebraska-Lincoln; Dena M. Abbott, University of Nebraska-Lincoln.
- 7. Silent Struggles: Navigating Stigma and Coping with Jinn Possession among Nigerian Muslims.** Umar Olansile Ajetunmobi, University of Kansas.
- 8. The Role of Family Support in alleviating Acculturative Stress among African Immigrant Women.** Dukanwojo Beulah Suleman, University of Nebraska-Lincoln; Sunkanmi Folorunsho, University of Nebraska-Lincoln.
- 9. Co-Creating Culturally Responsive Nutrition Education for Refugee and Immigrant Families for the First 1,000 Days of Life.** Emily Gratopp, University of Nebraska Lincoln; Marusa Jonas, University of Nebraska Lincoln; Zahraa Rida, University of Nebraska Lincoln; Tara Dunker, University of Nebraska Lincoln.
- 10. Review of the Community Care Hub Model as an Effective Cross-Sector Strategy to Address the Health-Related Social Needs of Community Members and Improve Health Equity and Presentation of a Case Example in Omaha, NE.** Kelly Nielsen, Omaha Pathways Community HUB/UNMC College of Public Health; Krystal Fox, Omaha Pathways Community HUB; Megan Surace, CommonSpirit Health.
- 11. Understanding Barriers and Facilitators to Cervical Cancer Screening for Women with Intellectual and Developmental Disabilities: A Qualitative Study.** Colby Kelley, University of Nebraska at Omaha; Anne Woodruff Jameson, University of Nebraska Medical Center; Kailey Snyder, University of Nebraska at Omaha.
- 12. Self-Swab HPV Screening: A Culturally Sensitive Alternative for Marginalized Populations.** Nour Elrokhsi, UNMC - College of Medicine; Dr. Melanie Menning, MD, UNMC.
- 13. Understanding Barriers in Breast Cancer Screening in Hispanics.** Bryan Benitez, UNMC Department of Surgery, Bryan Lugo Maldonado, UNMC Department of Surgery, Angel Lehn, UNMC Department of Surgery, Shirley Delair, Department of Pediatrics, Quan Ly, UNMC Department of Surgery.
- 14. A Standard Health Equity Impact Assessment to Enhance Community Voices in Healthcare.** Tomi Akanbi, New York State Department of Health; Fatima Abbas, New York State Department of Health.
- 15. Applying the RE-AIM Framework to the Implementation of the Omaha Pathways Community HUB Project to Assess Implementation and Progress Toward the Intended Goals of Reducing Health-Related Social Risk Factors and Improving Birth Outcomes for Pregnant and Postpartum Individuals in Omaha, NE.** Kelly Nielsen, Omaha Pathways Community HUB/UNMC College of Public Health; Krystal Fox, Omaha Pathways Community HUB; Tanika Cannon, CHI Health;

Jasmine Smith, *A Mother's Love*; Arnetta Stearns, *A Mother's Love*; Jayla Brooks, Charles Drew Health Center; Anthony Blake, UNMC College of Public Health.

16. **Bridging Health Gaps: Culturally Tailored Diabetes Education for the Karen Community.** Leigh Jahnke, University of Nebraska Medical Center; Moo Law Eh Soe, University of Nebraska at Omaha; Jessica Witt, University of Nebraska Medical Center; Melanie Menning, University of Nebraska Medical Center.
17. **Students Understanding of Minority Stress.** Madison Ellis, B.S., University of Nebraska-Lincoln; Tierney Lorenz, PhD, University of Nebraska-Lincoln.
18. **Health Outcomes Among MENA Populations in the US: A Comparative Analysis of Foreign-Born and Native-Born Individuals.** Michael Okyere, University of Nebraska-Lincoln, Department of Sociology.
19. **Empowering Care: Educating Pharmacy Teams to Bridge Health Literacy Gaps.** Nina Nguyen, UTHSCSA; Abigail Davis, UTHSCSA; Emily Holtz, UTHSCSA; Tharani Ravi, UTHSCSA; Divya Gunukula, UTHSCSA; Alex Joyce, UTHSCSA; Catherine Li, UTHSCSA; Daniel Meaders, UTHSCSA; Heyji Ro, UTHSCSA; Macy Shult, UTHSCSA; Rosa Su, UTHSCSA; Linh Tran, UTHSCSA.
20. **Hay There! Empowering Wellness and Connection in Rural America.** Hannah Guenther, Nebraska Extension.
21. **Sexual Minority Stress, Interoception and Women's Arousal Concordance.** Sydnee Lybarger, UNL Psychology Department; Tierney Lorenz, UNL Psychology Department.
22. **Peaks, Plateaus, and Pitfalls: Lessons on Expanding Vaccine Access and Uptake Through Community Partnership in Urban and Rural Counties in Northwestern Ohio.** Imani Driskell, Area Office on Aging of Northwestern Ohio, Inc.
23. **Interventions to Increase Cervical Cancer Screening Rates for Women with Intellectual and Developmental Disabilities: A Scoping Review.** Anne Woodruff Jameson, PT, DPT, University Of Nebraska Medical Center; Colby Kelley, University of Nebraska Omaha; Danielle Westmark, MLIS, University of Nebraska Medical Center; Kailey Snyder, PhD, MS University of Nebraska Omaha.
24. **Therapy-Seeking Barriers and the Effects of Healthcare Discrimination in Marginalized Groups.** Giyahna Richmond, University of Nebraska-Lincoln; Madison Ellis, University of Nebraska-Lincoln; Tierney Lorenz, University of Nebraska-Lincoln.
25. **Acceptability of Self-collected Pap Smears among Karen-speaking patients in the Midwest.** Neha Khalid, UNMC; Dr. Melanie Menning, UNMC.
26. **Assessing the Impact of Social Media Utilization by Diabetes Support Groups: Nigeria and the United States.** Daniel Pelemo, UNK; Sharon N. Obasi, UNK.
27. **Analyzing the Potential Benefits and Barriers of HPV Self-Swabs Utilized for Cervical Cancer Screening in Hispanic Populations.** Michaela Bartels, UNMC; Dr. Melanie Menning, UNMC.
28. **Immigration Trauma: Missed by Standard Trauma Assessments and Relations to PTSD and Depression.** Zainib Al-Jayashi, University of Nebraska-Lincoln; Arthur R. Andrews, PhD, University of Nebraska-Lincoln.
29. **Validation of a Survey for Evaluating 4-H Summer Camps Within an Equity Framework.** Natalie Koziol, Nebraska Academy for Methodology, Analytics & Psychometrics; Raynimol Thomas, Nebraska Academy for Methodology, Analytics & Psychometrics; Alexis Chavez, Nebraska Academy for Methodology, Analytics & Psychometrics; Jill Lingard, 4-H Youth Development; Rebecca Swanson, 4-H Youth Development; Makayla Burg, 4-H Youth Development.
30. **SNAP-Ed Nutrition Education Programming Fosters Confidence and Independence for Adults with Intellectual and Developmental Disabilities (IDD).** Alyssa Wessling, Nebraska Extension.
31. **A National Peer Affinity Group for Individual Practitioners Working in Healthcare.** Ashley Jackson, Institute for Healthcare Improvement; Amy Arrington, Institute for Healthcare Improvement.
32. **Public Health without Borders: Student Experiences of a Collaborative, Interdisciplinary Forced Migration and Health Training Program in Kenya.** Francisca Lawson Tettevie, Child, Youth and Family Studies, University of Nebraska-Lincoln; Emira Ibrahimasic, Global Integrative Studies, University of Nebraska-Lincoln; Julia Reilly, Global Integrative Studies, University of Nebraska-Lincoln; Lucy Njiru, Amref International University, Kenya; Cody S. Hollist, Child, Youth and Family Studies, University of Nebraska-Lincoln; Ericsson Ngetich, Mount Kenya University; Julie A. Tippens, Child, Youth and Family Studies, University of Nebraska-Lincoln.
33. **Measuring the Intersection of Structural Discrimination and Non-Compliance in Health Care.** Jacob Dahlke, Nebraska Medicine; Elizabeth Reisher, University of Nebraska Medical Center.

34. **Youth Voices of Blair County: Examining Trauma Informed Practices in Rural Pennsylvania.** Reem Ahmed, University of Nebraska-Lincoln; Haley Grant, Ph.D., University of Pittsburgh; Jessica Meyers, M.S.Ed, UPMC Center for High-Value Health Care; Leah Cope, MSW, UPMC Center for High-Value Health Care.
35. **Understanding Immigrant and Refugee Parent Perspectives on Child Development: Exploring Opportunities to Improve Access Developmental Screening and Early Intervention in Nebraska.** Laura Fritz, UNMC-MMI; Janella Kang, UNL; Alexis Chavez, UNL; Kerry Miller, UNMC-MMI; Lorey Wheeler, UNL; Amanda Prokasky, UNL; Julie Tippens; UNL.
36. **Targeting Health Disparities: Data-Driven Approaches for Enhancing Mental Health and Substance Use Interventions in Indiana.** Alyssa Smith, Black Onyx Management; Rebecca Shankman, Black Onyx Management.
37. **“We Don’t Have Mental Stress, We Have Life Stress”: The Social and Structural Determinants of Mental Health among Older Refugees and Refugees Living with Disabilities in Nairobi, Kenya.** Janella S. Kang, University of Nebraska-Lincoln; Lucy Njiru, Amref International University; Sara Al-Rishawi, University of Nebraska-Lincoln; Francisca Lawson Tettevie, University of Nebraska-Lincoln; Angela L. Palmer-Wackerly, University of Nebraska-Lincoln; Kazi Wahed, University of Nebraska-Lincoln; Patrick Okwarah, Amref International University; Alice Lakati, Amref International University; Josephat Nyagero, Amref International University; Lydia Makena Micheni, Albinism Society of Kenya; Sharon Alima, Albinism Society of Kenya; Daniel Moi, Albinism Society of Kenya; Samuel Maina Kagenyi, Albinism Society of Kenya; Milka Muchiri, Albinism Society of Kenya; Isaac Mwaura, Albinism Society of Kenya; Georgine Anyona, Moi University; Joshua Holstein, University of Nebraska-Lincoln; Ericsson Ngetich, Moi University; Julie A. Tippens, University of Nebraska-Lincoln.
38. **Understanding Reproductive Health Choices and Decisions: Narratives of Childbirth among BIPOC Women.** Satveer Kaur, University of Nebraska-Lincoln; Reem Ahmed, University of Nebraska-Lincoln; Corinthia Sanders, University of Nebraska-Lincoln.
39. **The Poetic Representation of Lived Experiences with Type 2 Diabetes.** Darlene K. Drummond, Dartmouth College; Satveer Kaur-Gill, University of Nebraska-Lincoln; Anthony Nguyen, University of Nebraska-Lincoln.
40. **Assessing the Role of Language as a Component of Quality Healthcare for Spanish-Speaking Residents in the United States.** Jennifer Arias, Drew University; Maria Turrero-Garcia, Drew University.
41. **Children’s Nebraska Pediatric Community Health Needs Assessment Listening Sessions Report.** Kevin T. Fuji, Creighton University; Josh Shirk, Voices for Children in Nebraska; Chrissy Tonkinson, Children’s Nebraska; Holly Dingman, Children’s Nebraska.
42. **Urban Health Opportunities Program (UHOP): Pathway to Improving Urban Underserved Healthcare Through Resilience, Thriving, and Belonging.** Clare Berry, Omaha Area Health Education Center, University of Nebraska at Omaha.